


## Yeast Interspecies Hybrids

# Identification of a novel interspecific hybrid yeast from a metagenomic spontaneously inoculated beer sample using Hi-C

Caiti Smukowski Heil<sup>1†</sup>, Joshua N. Burton<sup>1†,‡</sup>, Ivan Liachko<sup>1†,§</sup>, Anne Friedrich<sup>2</sup>, Noah A. Hanson<sup>1</sup>, Cody L. Morris<sup>3</sup>, Joseph Schacherer<sup>2</sup>, Jay Shendure<sup>1,4</sup>, James H. Thomas<sup>1</sup> and Maitreya J. Dunham<sup>1\*</sup> 

<sup>1</sup>Department of Genome Sciences, University of Washington, Seattle, WA USA

<sup>2</sup>Genetics, Genomics, and Microbiology, University of Strasbourg, Strasbourg, France

<sup>3</sup>Mollusk, Seattle, WA USA

<sup>4</sup>Howard Hughes Medical Institute, Chevy Chase, Maryland USA

\*Correspondence to:

Maitreya J. Dunham, Department of Genome Sciences, University of Washington, Seattle, WA, USA.

E-mail: maitreya@uw.edu

†Co-first authors.

‡Current address: Adaptive Biotechnologies, Seattle, WA, USA.

§Current address: Phase Genomics, Seattle WA, USA.

## Abstract

**Interspecific hybridization is a common mechanism enabling genetic diversification and adaptation; however, the detection of hybrid species has been quite difficult. The identification of microbial hybrids is made even more complicated, as most environmental microbes are resistant to culturing and must be studied in their native mixed communities. We have previously adapted the chromosome conformation capture method Hi-C to the assembly of genomes from mixed populations. Here, we show the method's application in assembling genomes directly from an uncultured, mixed population from a spontaneously inoculated beer sample. Our assembly method has enabled us to deconvolute four bacterial and four yeast genomes from this sample, including a putative yeast hybrid. Downstream isolation and analysis of this hybrid confirmed its genome to consist of *Pichia membranifaciens* and that of another related, but undescribed, yeast. Our work shows that Hi-C-based metagenomic methods can overcome the limitation of traditional sequencing methods in studying complex mixtures of genomes. Copyright © 2017 John Wiley & Sons, Ltd.**

**Keywords:** Hi-C; metagenome assembly; metagenomics; hybrid; hybridization; spontaneous fermentation

Received: 16 June 2017

Accepted: 2 September 2017

## Introduction

Once thought to be a rare phenomenon, hybrids are increasingly recognized as common in natural and industrial environments (Abbott *et al.*, 2013). Hybridization can act as an instantaneous, large-scale mutational event, introducing abundant genetic variation and potentially producing changes in gene expression, gene content, and karyotype. New combinations of alleles formed during the initial hybridization event, or transgressive segregation from subsequent recombination, may allow

the hybrid to explore greater phenotypic space than either of its parents, and thus to colonize new, uninhabited niches. There is abundant evidence suggesting that, because hybrids can explore unoccupied ecological niches, they may be particularly adept at invading novel habitats and even become invasive pests (Bullini 1994; Mallet 2007; Muhlfeld *et al.*, 2014; Prysacz *et al.*, 2014). In line with these findings, extensive hybridization is often associated with human-disturbed habitats (Dowling and Secor, 1997; Vallejo-Marín and Hiscock, 2016), and climate

change is predicted to increase the number of hybridization events (Kelly *et al.*, 2010; Hoffmann and Sgro, 2011).

Similarly, hybrids are often found in commercial settings where stress tolerance or adaptation to particular environmental conditions is important. Most famously, the lager brewing yeast *Saccharomyces pastorianus* is a hybrid between the commensal baking and brewing yeast, *Saccharomyces cerevisiae*, and the cryotolerant species *Saccharomyces eubayanus*. *S. cerevisiae* and *S. eubayanus* diverged ~20 million years ago and are 20% divergent at the coding level (Tamai *et al.*, 1998; Yamagishi and Ogata, 1999; Dunn and Sherlock, 2008; Nakao *et al.*, 2009; Baker *et al.*, 2015; Gibson and Liti, 2015). After what is presumed to be an allopolyploid event, *S. pastorianus* has undergone massive loss of chromosomes and chromosomal segments. While *S. pastorianus* genomic content remains fairly balanced in representation of both parental genomes, many hybrids are observed to have imbalanced retention and loss patterns. Hybrids amongst other members of the *Saccharomyces* clade have been discovered in wine fermentation and brewing operations (Gonzalez *et al.*, 2006, 2008; Bellon *et al.*, 2015; Wolfe 2015; Magalhaes *et al.*, 2017), in addition to a number of other fungal species hybrids outside of this well-studied clade. For example, a large proportion of strains of the spoilage yeast *Dekkera* (*Brettanomyces*) *bruxellensis*, which itself is used in brewing, originated through interspecific hybridization (Hellborg and Piskur, 2009; Borneman *et al.*, 2014), and these hybrids have a selective advantage over non-hybrids in wineries (Borneman *et al.*, 2014).

It has been suggested that the previously unrecognized ubiquity of hybrid species is at least in part due to issues of detection and identification (Dowling and Secor, 1997), which may be particularly true in microbial taxa (Albertin and Marullo, 2012). One of the issues complicating detection of microbial hybrids is the difficulty of dissecting microbial communities in general, which can be made up of many different species, most of which are unculturable (Lane *et al.*, 1985; Pace *et al.*, 1986; Handelsman, 2004; Marcy *et al.*, 2007). With the advancement of next-generation sequencing, the field of metagenomics has moved from relying on 16S rRNA gene fingerprinting methods (Lane *et al.*, 1985; Pace *et al.*, 1986; Rajendhran and

Gunasekaran, 2011) to various applications of shotgun sequencing (Venter *et al.*, 2004; Human Microbiome Project Consortium, 2012; Iverson *et al.*, 2012; Howe *et al.*, 2014), single-cell genome sequencing (Marcy *et al.*, 2007; Stepanauskas 2012; Kamke *et al.*, 2013) and associated computational methods (Saeed *et al.*, 2012; Carr *et al.*, 2013; Hug *et al.*, 2013; Wood and Salzberg, 2014).

Previous work from our groups and others demonstrated the use of contact probability maps generated through chromosome conformation capture methods (Lieberman-Aiden *et al.*, 2009; Dekker *et al.*, 2013) to assemble complex genomes (Burton *et al.*, 2013; Kaplan and Dekker, 2013), and in particular, to deconvolute complex metagenomic samples (Beitel *et al.*, 2014; Burton *et al.*, 2014; Marbouty *et al.*, 2014). The basis of this idea takes advantage of the Hi-C protocol, in which crosslinking of proximal chromatin segments occurs prior to cell lysis, thereby ensuring that each Hi-C interaction involves a pair of reads generated from within the same cell. In a diverse microbial population, such data can help delineate which genomic sequences originated from individual species. Burton *et al.* demonstrated that the method, MetaPhase, can reliably deconvolute and assemble genomes from up to 18 eukaryotic and prokaryotic species from synthetic mixtures in the laboratory. Importantly, this method should also allow hybrids to be identified in a mixed sample, since crosslinks would be made between the different genomes in contrast to the solely within-genome linkages in a simple mix of the parental species.

Here, we extend this work to explore the microbial community of a spontaneously inoculated beer sample. In the tradition of Belgian lambic, boiled wort is left open to the elements and is fermented solely from autochthonous yeast and bacteria (Vanoevelen *et al.*, 1977; Verachtert and Iserentant, 1995; Keersmaecker 1996). Past studies of lambic-style fermentation have relied heavily on culturing various species over the course of fermentation; more recently, genetic tools such as terminal restriction fragment length polymorphism, barcoded amplicon sequencing and quantitative PCR have shed light on the microbial progression, but still are limited by deconvolution issues (Bokulich *et al.*, 2012; Spitaels *et al.*, 2014b). Our method deconvolutes the microbial genomes in the beer sample without culturing or *a priori*

knowledge of species or strain, revealing eight organisms, including novel strains and species of bacteria and yeast, and a novel yeast hybrid. The hybrid appears to be a recent hybridization event between *Pichia membranifaciens* and a previously undescribed species ~10–20 million years divergent. We characterize the genome and fermenting capabilities of this novel hybrid, and describe the other species identified. This is one of the first demonstrations of computational metagenomic deconvolution of a non-laboratory sample (see also Marbouty *et al.*, 2014, 2017), and the first method with the ability to detect hybrids in a heterogeneous population.

## Materials and methods

### Sample collection

We obtained 20 mL of actively growing culture sampled from the top of a wine barrel containing the spontaneously inoculated beer 'Old Warehouse,' produced by Epic Ales in Seattle, WA on 8 May 2014.

### Shotgun, Hi-C libraries

Approximately 5 mL of the sample was pelleted and total DNA was isolated using a standard phenol/chloroform glass bead extraction. Shotgun libraries were prepared using the Nextera Kit (Illumina). Hi-C libraries were prepared as described (Burton *et al.*, 2014). Sequencing was performed on the NextSeq 500 Illumina platform.

### De novo assembly, deconvolution, and individual species assembly

The draft metagenome assembly was created using the IDBA-UD assembler (Peng *et al.*, 2012) with the following parameters: '--pre\_correction --mink 20 --maxk 60 --step 10'. Hi-C reads were aligned to the draft assembly using BWA (Li and Durbin 2009), following the strategy of Burton *et al.*, (2014). Clustering of contigs into individual clusters was done using MetaPhase (Burton *et al.*, 2014; <https://github.com/shendurelab/MetaPhase>). Independently of MetaPhase, in order to determine species identity, contigs were mapped to the BLAST sequence database (<https://blast.ncbi.nlm.nih.gov/Blast.cgi>; July 2014 database), using

blastn with the following parameters: -perc\_identity 95 -evalue 1e-30 -word\_size 50. The percentage of each cluster assembly aligning to the reference was estimated using AssemblyEvaluator (<https://github.com/snayfach/AssemblyEvaluator>).

### Hybrid assembly and analysis

To confirm the putative hybrid from the metagenome assembly, the hybrid was isolated from a single colony. DNA was extracted and prepared with a Nextera kit, as above. Reads were mapped to the metagenome assembly using BWA (Li and Durbin, 2009), and once confirmed as a hybrid, a new draft assembly was created using IDBA-UD with parameters as above (Peng *et al.*, 2012). To split the assembly into species-specific sub-genomes, contigs from this new assembly were compared against the *P. membranifaciens* genome v2.0 (Riley *et al.*, 2016) using blastn with an e-value of  $1 \times 10^{-12}$  (Altschul *et al.*, 1990). All contigs whose single best blastn match to the *P. membranifaciens* genome is  $\geq 97\%$  identical were classified as sub-genome A, whereas all contigs whose single best blastn match to the *P. membranifaciens* genome is  $\geq 77\%$  and  $< 92\%$  identical were classified as sub-genome B. Contigs of high divergence and contigs with identity between 92 and 97% were unable to be parsed into sub-genomes. Augustus v3.2.1 was used to create gene predictions for both sub-genomes (Stanke *et al.*, 2004; Stanke and Morgenstern, 2005). Gene predictions between sub-genomes were compared using blastn and blastp using the best hit. BLAST was also used to assess coverage differences between the sub-genomes. A rough approximation of divergence between the sub-genomes was estimated by constructing neighbour-joining trees for *P. membranifaciens* predicted genes (g1201, g2530) using ClustalOmega (Sievers *et al.*, 2011) and PHYLIP (Felsenstein, 2005), and sequence from each sub-genome, as compared with results using *S. cerevisiae*, *S. paradoxus*, *S. kudriavzevii* and *S. uvarum*.

### Neighbour-joining tree building for *S. cerevisiae* strain phylogeny

The biallelic segregating sites detected among a set of previously sequenced *S. cerevisiae* isolates

(Strope *et al.*, 2015; Gallone *et al.*, 2016) and the OW sequence were used to elucidate the phylogenetic relationships among them. Based on these sites, a distance matrix was first computed and submitted to bionj algorithm (R packages ape and SNPPrelate) to construct a neighbour-joining tree.

### Lab-appropriate wort

Our protocol was designed to make 1.75 L of a laboratory-appropriate American-style amber beer wort. A 320 g aliquot of an amber liquid malt extract was used to meet the Brewers Association's Beer Standard Guidelines for an American style amber/red ale with an original gravity of 11.9–14.3 °Plato. Our wort was within this range at 13.77 °Plato. The sugar composition was: 44% maltose, 11% maltotriose, 13% glucose, 3% sucrose, 4% fructose and 25% unfermentable dextrins. To prepare media, 320 g of liquid malt extract was added to 1.5 L of 77°C water using a heat block with a running stir bar. Once in solution, the heat was adjusted such that the wort was allowed to achieve a rolling boil without overflowing for 1 h. The media was then repeatedly poured through paper filters until achieving a uniform, cloudless consistency. Distilled water was added to bring the solution to a total of 1.75 L before being covered. The media was vacuum filtered through Nalgene 500 mL Rapid-Flow Bottle Top Filters with a pore size of 0.45 µm, and into a sterile 2 L bottle. The bottle was stored at room temperature and away from light exposure. Wort was inoculated with a single colony suspended in 2 mL of water after the temperature reached 22°C. The wort was aerated via swirling at the point of inoculation, after which no shaker was used and no air was pumped in. It was kept at room temperature for the duration of 5 weeks. After 5 weeks, ethanol volume, pH and sugar content were analysed (White Labs, San Diego, CA, USA). No single-sugar fermentation studies were conducted at this time.

### Data availability

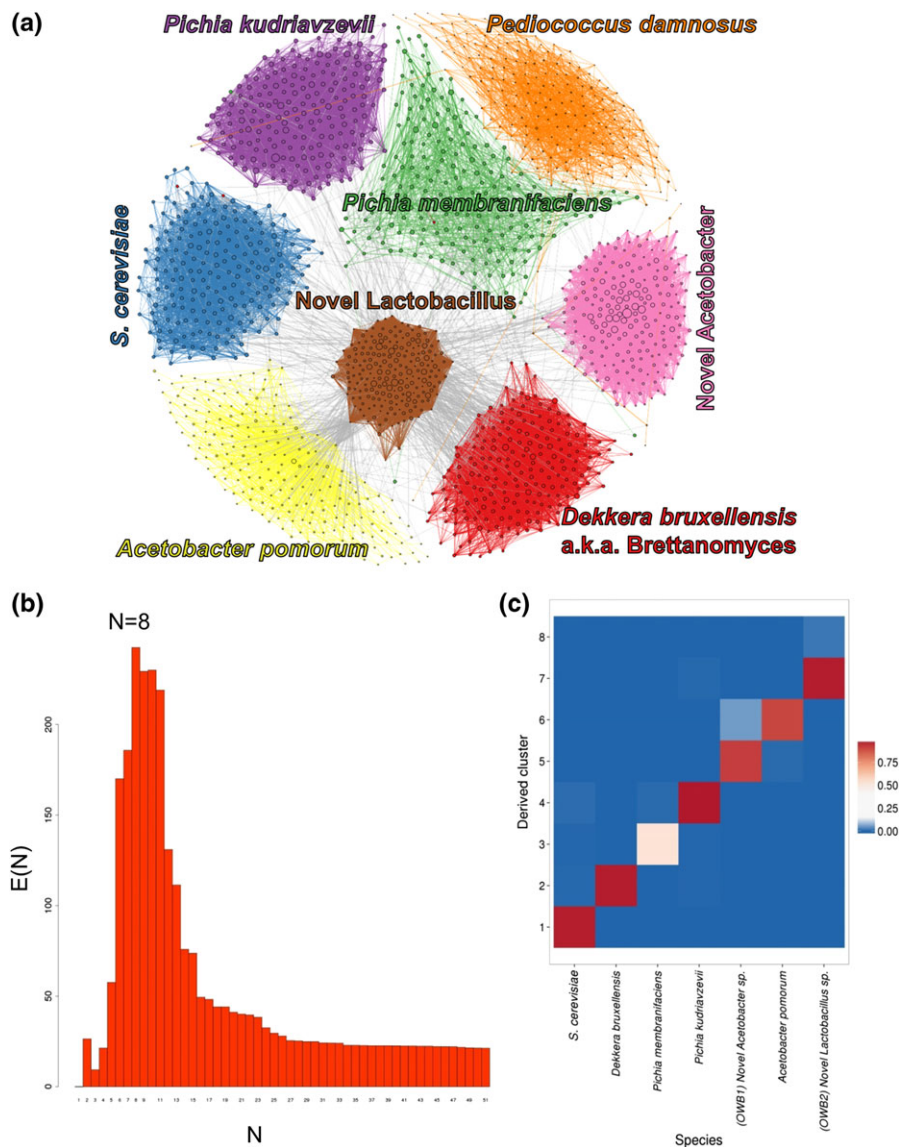
Reads and assemblies for the metagenome are deposited at NCBI under the Project ID PRJNA390460.

## Results

### Hi-C/MetaPhase on a craft beer sample

We obtained a 20 mL sample of active culture growing in wort that had been inoculated in open air and serially pitched in a used wine barrel for several years by Epic Ales in Seattle, Washington. We performed shotgun sequencing and Hi-C on this sample and applied the approach utilized by Burton *et al.* (2014) to assemble and deconvolute the metagenomic sample. Briefly, we sequenced two shotgun libraries, one with 3.61 M read pairs of 35 BP each, and one with 27.5 M read pairs of 100 BP each, and two Hi-C libraries, one using the HindIII restriction site and one using the NcoI restriction site, with 13.6 M and 14.5 M read pairs, respectively. We converted the shotgun reads into a *de novo* assembly using IDBA-UD (Peng *et al.*, 2012), yielding 32 549 contigs with an N50 of 5285 BP at a minimum contig length of 200 BP and a total size of 67 496 013 BP. We mapped the Hi-C reads to the assembly using BWA (Li and Durbin 2009), and applied the MetaPhase software to deconvolute draft contigs into a progressively decreasing number of clusters while measuring the intra-cluster enrichment signal as described in Burton *et al.*, (2014). This signal reached a maximum at  $N = 8$  clusters (Figure 1b), suggesting the presence of eight discernable species-level genomes in this assembly (Figure 1a, Table 1). Some 11 189 contigs are included in these eight clusters, representing 73.3% of the initial sequence assembly (49 498 624 BP); the remaining contigs are small (N50 of 1349 BP) and could not be confidently clustered. Seven of the eight clusters matched to a unique species of either fungal or bacterial origin (Figure 1c), and in each of these clusters, the quantity of sequence served to indicate the completeness of coverage of the species' genome (Table 1). In the eighth cluster, no significant quantity of sequence closely matched a known reference genome; however, several sequences in this cluster matched individual genes from *Pediococcus damnosus*, a known spoilage bacterium for which no complete reference genome existed in the BLAST database at the time of analysis (but see Snauwaert *et al.*, 2015). This cluster is now confirmed to be *P. damnosus*.





**Figure 1.** MetaPhase deconvolutes species from a spontaneously inoculated beer sample (a) Clustering of the Old Warehouse assembly. Each contig is shown as a dot, with size indicating contig length, coloured by species. Edge widths represent the densities of Hi-C links between the contigs shown. (b) Determining the approximate number of species in the metagenome. We ran the hierarchical agglomerative clustering algorithm on the draft assembly. In this algorithm, the number of clusters starts high and gradually decreases as clusters are merged together; to generate this data, we continued clustering all the way down to  $N = 1$  cluster. Shown is the metric  $E$ , or intra-cluster link enrichment, at each value of  $N$ . It is assumed that the maximum value of  $E(N)$  occurs when  $N$  is roughly equal to the true number of distinct species present in the draft assembly. For this assembly, this occurs at  $N = 8$  clusters. (c) Validation. This heatmap indicates what fraction of the sequence in each MetaPhase cluster maps uniquely to each of the reference genomes of the predicted species. Note that not all sequence is expected to map uniquely to one species. x-Axis, the seven species; y-axis, the MetaPhase clusters. Note, this excludes the *P. damnosus*-like cluster because there was no public *P. damnosus* reference genome available

**Table 1.** Species identified in spontaneously inoculated beer

Cluster	Number of contigs	Total length (bp)	N50 (bp)	Percentage of reference covered by assembly	Abundance	Plurality reference	Percentage eukaryotic	Plurality taxonomy
1	1716	9 251 667	8278	69.03%	9.25%	#0 (SC-FY)	100.00%	<i>Saccharomyces cerevisiae</i>
2	3367	8 294 670	4247	55.32%	16.16%	#1 (DB)	99.69%	<i>Dekkera bruxellensis</i>
3	3822	16 898 196	6415	64.01%	19.86%	#2 (PM)	96.43%	<i>Pichia membranifaciens</i>
4	1068	9 135 821	12 637	80.40%	15.16%	#3 (PK)	100.00%	<i>Pichia kudriavzevii</i>
5	285	286 331	69 866	NA	0.08%	#4 (OWB1)	0.00%	<i>Acetobacter</i> ; <i>Gluconacetobacter xylinus</i>
6	212	2 618 979	12 000	47.39%	1.36%	#5 (Ap)	0.00%	Bacteria; a-proteobacteria; <i>Acetobacter pasteurianus</i>
7	501	941 088	2554	NA	0.43%	#6 (OWB2)	0.00%	Bacteria; firmicutes; <i>Lactobacillus brevis</i>
8	218	2 071 872	15 372	84.53%	11.68%	#6 (OWB2)	0.00%	Bacteria; firmicutes; <i>Pediococcus damnosus</i>

### Identification and characterization of a hybrid yeast

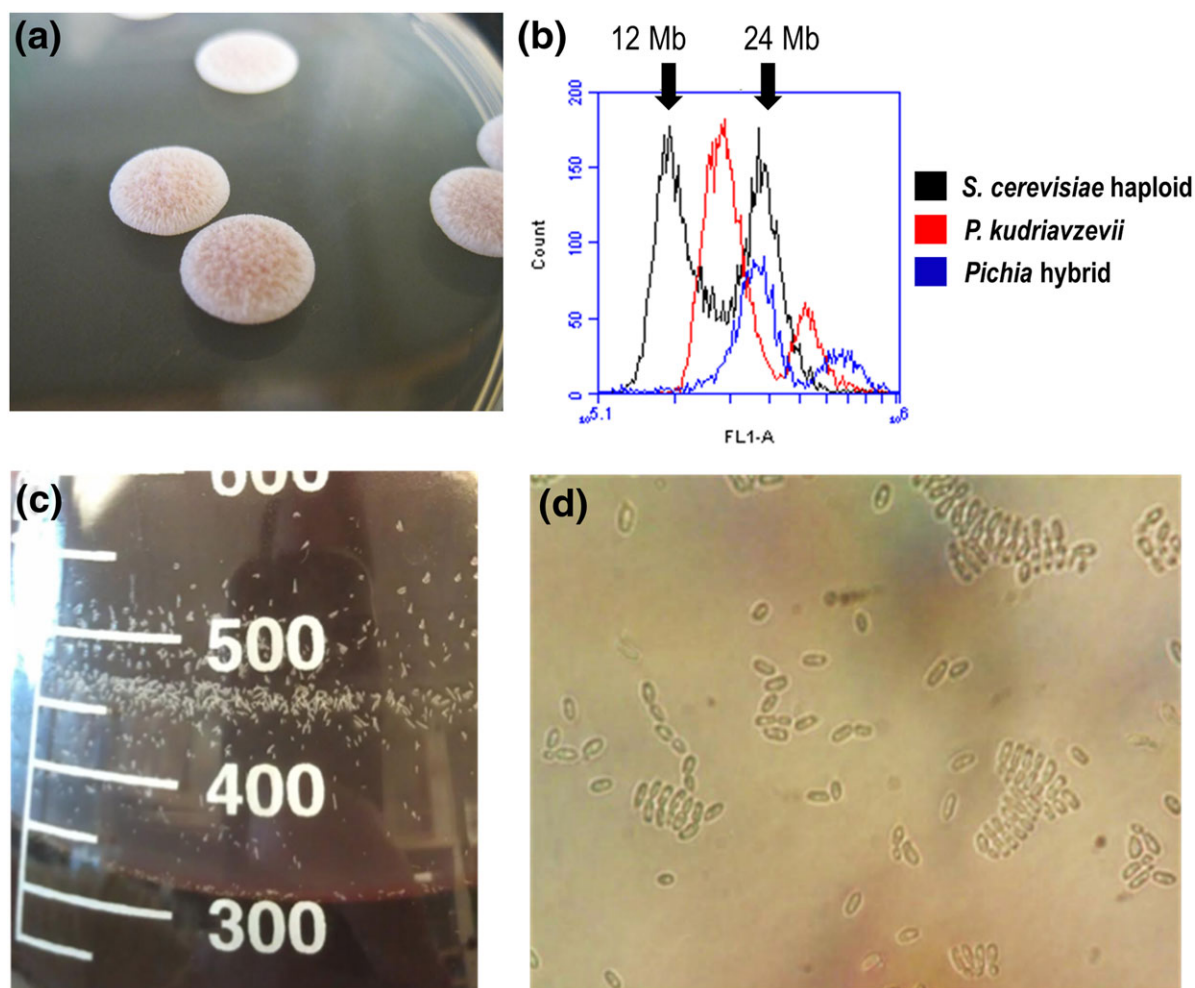
One of the more abundant organisms in the sample had sequencing reads from the yeast *Pichia membranifaciens*, a common food spoilage species (Kurtzman *et al.*, 2011; Riley *et al.*, 2016). *P. membranifaciens* has been identified in spontaneously inoculated beer (Spitaels *et al.*, 2014b), wine (Rankine 1966; Stefanini *et al.*, 2016) and other beverages (Lachance 1995; Silva *et al.*, 2009). The assembly generated here has a genome size roughly twice that of *P. membranifaciens*, and upon further inspection, BLAST results were consistent with two separate genomes, one belonging to *P. membranifaciens* and the other to an unknown, related species. We hypothesized that this could result either from a technical error in MetaPhase collapsing two species into one cluster, or alternatively, a hybridization event. To test this hypothesis, isolates of the putative hybrid were grown and sequenced (Figure 2a). Sequencing reads were mapped back to the MetaPhase assembly, and mapped exclusively to the cluster identified as the hybrid or to unclustered reads (which were unable to be assembled), substantiating cluster 3 as a true hybrid. This is further supported by ploidy analysis confirming a genome size of ~24 Mb (Figure 2b).

Contigs from the assembly were parsed into two genomes using percentage identity compared with *P. membranifaciens* (Riley *et al.*, 2016), with contig identity >97% classified as sub-genome A (*P. membranifaciens*), and contig identity between

77 and 92% classified as sub-genome B (unknown species). Sub-genome A has 5792 predicted genes and sub-genome B has 5742 predicted genes, similar to the 6604 ORFs in *S. cerevisiae* (of which 5159 have been verified). Of 4780 unique protein matches between the two sub-genomes, 92% of proteins share 70% amino acid similarity or higher (4410 proteins), and of these, 56% have >90% amino acid identity. Phylogenetic analysis suggests ~10–20 million years divergence between the hybrid parentals, which appears consistent with the amino acid divergence. However, we note that this could be an underestimate since we only considered genes with matches between sub-genomes.

Many hybrids experience gene loss, copy number changes and aneuploidy following a hybridization event (Abbott *et al.*, 2013). In a crude sense, the amount of loss can date a hybridization event, with more genomic homogenization indicating a more ancient hybridization event. To estimate the ‘completeness’ of the hybrid genome, hybrid contigs were compared with *P. membranifaciens* to obtain coverage estimates. About 2.5% of the *P. membranifaciens* genome has no coverage from the hybrid, mostly in telomeric regions. Of the rest of the genome, 88.8% is covered exactly twice, and 89.6% is covered two or more times. Most of the regions with greater than 2× coverage are probably artefacts of the blast method and overlapping assembly contigs, although we have evidence for potential copy number variants in gene regions in both sub-genomes.

Sub-genome B contig 60\_487 is duplicated relative to the rest of the genome and contains



**Figure 2.** A novel interspecific *Pichia* hybrid. (a) Isolated colonies of the *Pichia* hybrid show distinct colony morphology. (b) Flow cytometry indicates the hybrid genome (blue) size is approximately 24 Mb, similar to G2 haploid *Saccharomyces cerevisiae*. (c) Growth in wort shows aggregates on the flask side. (d) Growth in wort shows palisades pattern

three predicted genes: g1333 (methionine permease, *MUP1*), g1334 (hypothetical protein in *P. membranifaciens*, similarity to methionine permease in *P. kudriavzevii*) and g1335 (hypothetical protein in *P. membranifaciens*, similar to allantoin permease in *P. kudriavzevii*). All three of these genes are present in single copy in sub-genome A. Sub-genome A contig 60\_428 is also duplicated and contains a single predicted gene, g1144, an oligopeptide transporter (*OPT2*). It is not present in sub-genome B, representing either a loss of heterozygosity event or incomplete assembly. Breakpoints of both duplication events are not identifiable as the copy number increase spans

the whole contig, suggesting that the breakpoints are in unassembled regions which may contain additional genes of interest.

Approximately 10.4% of the *P. membranifaciens* genome is covered only once, but the large majority of that is in short fragments distributed across the genome (average length 202.19 BP, median length 106 BP), most likely an artefact of incomplete hybrid assembly or unusually divergent regions of subgenome B. Still, there are 120 segments of 1 kb or more that are covered once, representing 2.7% of the genome (total length of 317 kb), and might represent missing genes in one or the other sub-genomes. Overall, these

observations are consistent with a recent hybridization event.

### *Pichia* hybrid does not play a significant role in fermentation

To characterize the fermenting capabilities of the *Pichia* hybrid, the isolate was used to inoculate a wort media at room temperature for 5 weeks. During this time, aggregates accumulated and could be seen rising to the wort's surface and attaching to walls of the fermentation vessel (Figure 2c). When viewed under a microscope, cells appeared to bend at the points of cell division, resulting in a palisade arrangement with stacking patterns (Figure 2d). No pellicles formed on the surface of the wort, in contrast to both *P. membranifaciens* and *P. kudriavzevii*, indicating that the hybrid may have lost this phenotype (Matthew Bochman, pers. comm.).

Filtrates of the starting wort media and the culture after 5 weeks were analysed. The pH of the starting wort and the finished product reflect standard brewing measurements at 4.57 and 4.53 pH, respectively. These pH values are consistent with the avoidance of flavour and contamination problems (e.g. a higher pH would signal food safety issues), indicating that the *Pichia* hybrid is not typical of a spoilage species in this respect.

Extract analyses were completed to determine the amount of non-fermentable carbohydrates remaining in the product after culturing. According to the Real Extract test, the original wort was valued at 13.75 °Plato and after 5 weeks at 13.61 °Plato. The Apparent Extract/Final Gravity in an American style amber/red ale should be 2.5–4.6 °Plato (Papazian, 2017). The alcohol by weight in this style of beer should be 3.50–4.80%, whereas the *Pichia* hybrid product was 0.02%. The final calorie content per a 12 oz serving of beer typically drops to ~160 kcal, whereas the hybrid fermentation product was valued at 202.68 kcal. In addition to this, percentages based on the entire contents of the media showed that, over 5 weeks, glucose levels dropped from an initial measure of 1.62% to a final measure of 1.22%. The hybrid may incrementally breakdown maltotriose and fructose, dropping from 1.46 to 1.05% and from 0.57 to 0.22%, respectively, but did not appear to be able to reduce the levels of maltose. However, this test

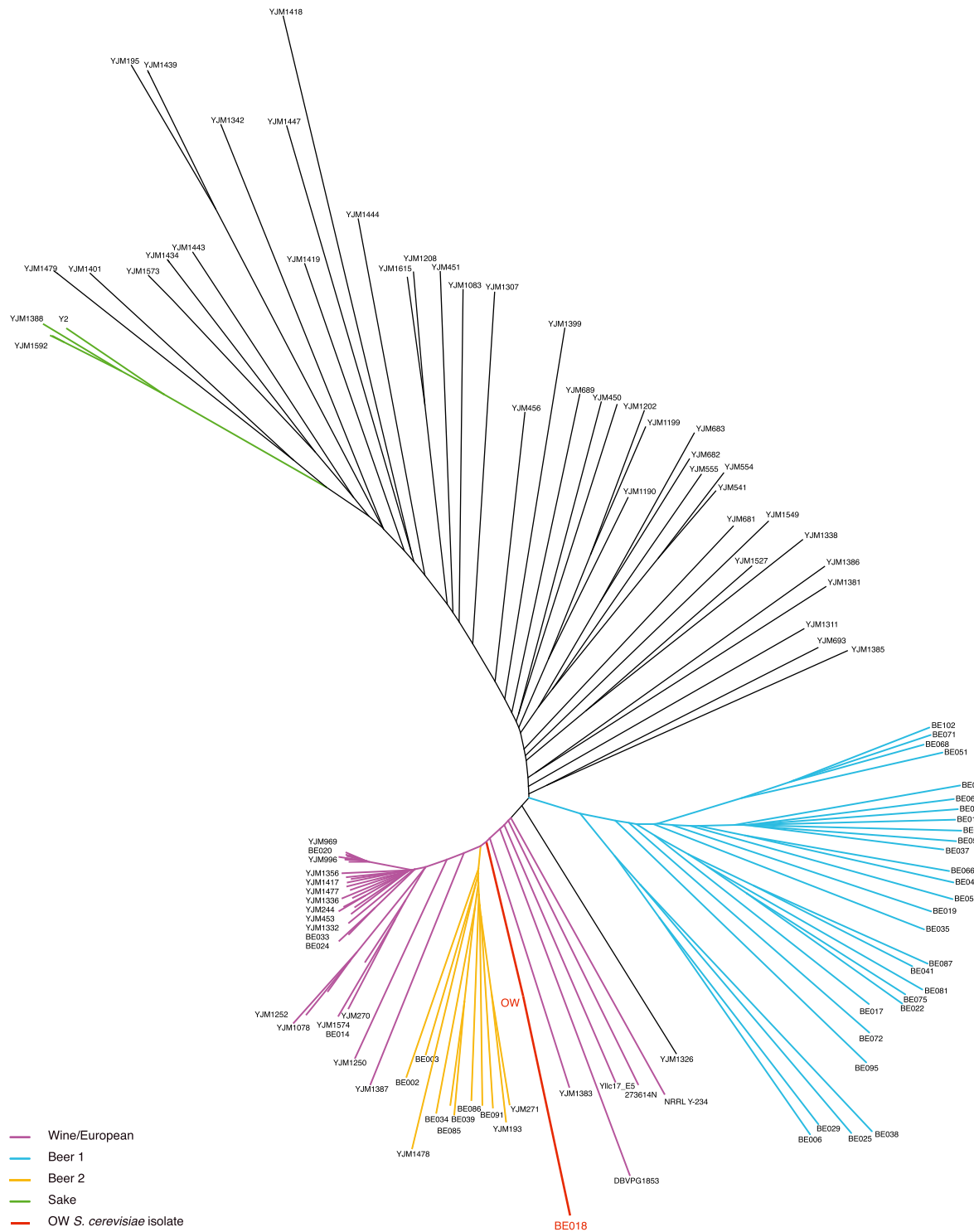
would not distinguish sugars created as metabolic byproducts from those present initially. Single-sugar fermentation studies could be done in the future to better define the metabolic activities of the hybrid. These results do indicate that the *Pichia* hybrid did not significantly metabolize much of the available carbohydrates into alcohol within this wort environment, and may suggest that it is dependent on byproducts or enzymes from other organisms in a mixed population. These results may also reflect a lack of aeration, as we did not employ any aeration methods during the 5 week fermentation, and a recent study noted that *P. kudriavzevii* is not able to grow in the absence of oxygen and therefore can only grow at early stages of fermentation (van Rijswijck *et al.*, 2017).

### Metagenomic deconvolution reveals novel strains and species of bacteria, yeast

In addition to this novel hybrid, we additionally identified and assembled whole genome sequences for three other species of yeast and four species of bacteria. These included the yeasts *S. cerevisiae*, *Dekkera bruxellensis* and *Pichia kudriavzevii*. *D. bruxellensis* and *P. kudriavzevii* are both generally associated with spoilage in beer and wine, although *D. bruxellensis* is strongly associated with spontaneous fermentation beers and is prevalent in these cultures after 4–8 months of fermentation (Vanoevelen *et al.*, 1977; Verachtert and Iserentant, 1995; Spitaels *et al.*, 2014b; Steensels *et al.*, 2015). *D. bruxellensis* is known to have considerable strain variation in chromosome number and ploidy with genome size estimates ranging dramatically; here, the size estimate is comparable with haploid *S. cerevisiae*, considerably smaller than the 20–30 Mb previously estimated (Hellborg and Piskur, 2009), although this could partially be explained by incomplete assembly.

The *S. cerevisiae* sequence appears to be closely related to the Canadian beer strain BE018 and the domesticated European wine cluster (Strope *et al.*, 2015; Gallone *et al.*, 2016) (Figure 3), although analysis of allele frequencies indicated that multiple strains may be present, or that the strain varies in ploidy. Although the original wort inoculation was spontaneous, at various points over the course of the Old Warehouse production the barrel was topped off with other beers which were brewed using commercial ale strains. At this





**Figure 3.** Phylogeny of *S. cerevisiae*. Neighbour-joining tree of *S. cerevisiae* strains representative of the species diversity (Strope *et al.*, 2015; Gallone *et al.*, 2016) and OW (for Old Warehouse) *S. cerevisiae* strain (red)

point it is unclear if the *S. cerevisiae* isolated from this sample was initially present, or derived from these later additions.

Consistent with previous studies of spontaneous fermentation beers, we observe acetic acid bacteria (AAB) *Acetobacter pomorum* and a previously unidentified species of *Acetobacter* (OWB1) and lactic acid bacteria (LAB) *Pediococcus damnosus* and a previously unidentified species of *Lactobacillus* (OWB2), similar to *Lactobacillus brevis*. Spitaels *et al.* recently identified two new species of AAB in a traditional Belgian lambic fermentation: *Acetobacter lambici* and *Gluonobacter cerevisiae* (Spitaels *et al.*, 2014, b), although we are unable to determine if OWB1 is related to *A. lambici* at this time. Both OWB1 and OWB2 have beer spoilage genes as identified by Fujii *et al.* (2005), who identified a locus specific to a wide variety of beer-spoilage strains including *P. damnosus*, *L. collinoides*, *L. coryniformis* and *L. brevis*.

## Discussion

Here, we leverage Hi-C to characterize a metagenomic sample isolated from a spontaneously inoculated beer from Epic Ales in Seattle, Washington. The method identified the yeasts *D. bruxellensis*, *P. kudriavzevii* and *S. cerevisiae*, and a novel *Pichia* hybrid composed of *P. membranifaciens* and an unidentified, related species. We also observed the AAB *Acetobacter pomorum* and a novel *Acetobacter* species, and the LAB *Pediococcus damnosus* and a novel *Lactobacillus* species. We present genome assemblies for each, without culturing or any *a priori* knowledge of community makeup. This represents one of the first studies to deconvolute an unknown mixed sample without culturing (see also Marbouty *et al.*, 2014, 2017), and demonstrates the ability of this method to both identify novel species, and of particular interest, identify novel hybrids.

### Spontaneous inoculation brewing

The traditional Belgian lambic style of fermentation dates back hundreds of years (Keersmaecker 1996), and has recently gained popularity in the American craft brewery community. Phenotypic identification

and culturing, and more recently various genetic methods, have illustrated the microbial progression of these beers, which typically lasts 1–3 years. The first phase lasts for 30–40 days and is dominated by Enterobacteriaceae (Vanoevelen *et al.*, 1977; Martens *et al.*, 1991, 1997; Bokulich *et al.*, 2012; Spitaels *et al.*, 2014b); this is followed by the main fermentation, characterized by *Saccharomyces* yeasts (including *S. cerevisiae*, *S. pastorianus* and *S. uvarum*) and lasts 3–4 months. The acidification phase succeeds fermentation and is characterized by the increasing isolation of LAB, and *Dekkera* species after 4–8 months of fermentation. Around 10 months, LAB start to decrease as the wort is gradually attenuated. AAB are isolated throughout the brewing process.

In comparison with previous spontaneous inoculation studies, which typically sample over the course of 1–3 years, we only sampled one batch at a single time-point. The sample was obtained after new wort was added to a used wine barrel, from which several prior batches of the ‘Old Warehouse’ beer had already been bottled. Thus, the mixed population we extracted had probably been established for several years in various configurations. We recapitulate some of the previous findings, and also identify several novel strains of bacteria. The diversity of AAB, LAB, and other yeasts found in cultures at various timepoints in other samples can be explained by multiple possibilities. It is possible that some species are present at undetectable levels in our sample, or that more species are present in the slurry of the barrel, or are embedded in the barrel itself, that were not captured with our sampling method, which only extracted actively growing culture from the aqueous phase. Furthermore, many researchers have found that microbiota are specific to a given environment (Knight *et al.*, 2015; Jara *et al.*, 2016), so differences between different breweries are to be expected. For example, traditional lambics are brewed in breweries in Belgium that produce no other style of beer, whereas in the USA, a different community of yeast and bacterial species are established in breweries that may be experimenting with lambic-style fermentation (Bokulich *et al.*, 2012).

While *S. cerevisiae* appears chiefly responsible for fermentation, mixed fermentations with non-*Saccharomyces* yeasts in wine and cider have been shown to produce desirable aroma and

flavour complexity (Rojas *et al.*, 2001; Clemente-Jimenez *et al.*, 2005; Viana *et al.*, 2008; Ye *et al.*, 2014; van Rijswijck *et al.*, 2017). The yeast *D. bruxellensis* helps characterize the ‘funky’ flavour of spontaneous inoculation beers; it produces phenol compounds, described as clove-y or medicinal, and smaller compounds often described as barnyard or horse blanket. *D. bruxellensis* and *S. cerevisiae* actually share many important brewing traits, such as the ability to produce high ethanol levels, high tolerance towards ethanol and the ability to grow without oxygen and in acidic environments (Rozpedowska *et al.*, 2011), but they diverged ~200 million years ago, and are thought to have independently evolved these phenotypes (Woolfit *et al.*, 2007). While *S. cerevisiae* outcompetes *D. bruxellensis* when sugar is abundant, the roles are changed at the end of fermentation, when sugar is depleted and only low amounts of nitrogen are available (Nardi *et al.*, 2010).

*D. bruxellensis* is more closely related to the *Pichia* species than it is to the *Saccharomyces* yeasts (Woolfit *et al.*, 2007; Piskur *et al.*, 2012). Prior to reclassification, the *Pichia* genus included more than 100 species, but has been refined to 20, including the type species of the genus *P. membranifaciens*, and the distantly related *P. kudriavzevii* (Kurtzman *et al.*, 2008; Kurtzman, 2011). *P. membranifaciens* and *P. kudriavzevii* are most commonly associated with food and beverage spoilage (Kurtzman, *et al.*, 2011; Chan *et al.*, 2012), but seem to play a role in various fermentations (Lachance, 1995; Daniel *et al.*, 2009; Silva *et al.*, 2009; N’Guessan *et al.*, 2011; Del Monaco *et al.*, 2014; Spitaels *et al.*, 2015; Stefanini *et al.*, 2016; Varela and Borneman, 2017). A study of wine deacidification showed that *P. kudriavzevii* increased a wine’s fruity aroma and could degrade L-malic acid, increase the pH and produce low levels of ethanol, important levels of glycerol and acceptable amounts of acetic acid (Del Monaco *et al.*, 2014). *P. membranifaciens* is repeatedly isolated from lambic and gueuze beers (Spitaels *et al.*, 2014b, 2015). Attempts to ferment with the *Pichia* hybrid discovered in this sample suggest that it does not significantly contribute to ethanol production, nor did it change the acidity of the wort; however, it might contribute flavour compounds and/or act in concert with other members of the community. Although recent work suggests sensory profiles of beers fermented with *Pichia*

yeasts are undesirable (Osburn *et al.*, 2018), we did not detect an obviously objectionable profile.

## Conclusions

The discovery of a new interspecific hybrid from a brewing environment adds to an increasing number of similarly documented cases, raising several interesting questions. Are there particular conditions in brewing environments that select for hybridization events? For example, a recent study found that chemical–physical conditions in the gut of wasps selected for hybridization events between *S. cerevisiae* and *S. paradoxus* (Stefanini *et al.*, 2016). Brewing environments could also simply be enriched in both population size and diversity of species, thus presenting more opportunities for hybridization than their natural environments. Perhaps previously established hybrids have a selective advantage in brewing environments, which there is some evidence for with *Dekkera* hybrids in wine environments (Borneman *et al.*, 2014). Alternatively, the explanation could simply be sampling bias: yeast hybrids happen in many places but breweries and wineries are heavily sampled. These hypotheses are not mutually exclusive, and present a rich field for further study. With new detection tools, like the method presented here, we have the ability to identify new hybrids from a variety of taxa and environments, thus providing a critical tool to understanding hybrid biology and ecology.

## Acknowledgements

We thank Benjamin Vernot for initiating the collaboration with Epic Ales. We appreciate the feedback we received from two anonymous reviewers, and from many brewers, particularly Matthew L. Bochman, Ron Extract and Tom Schmidlin. This work was supported by National Science Foundation grant 1516330 (M.J.D.), National Institute of Health (NIH)/National Human Genome Research Institute (NHGRI) grant T32HG000035 (J.N.B.), NIH/NHGRI grant HG006283 (J.S.), NIH/National Institute of General Medical Sciences grant P41 GM103533 (M.J.D.), DOE-LBL-JGI grant 7074345/DE-AC02-05CH11231 (J.S.), and NIH/National Institute of Allergy and Infectious Diseases grant 1R43AI122654 (I.L.). I.L. was also supported by the UW Commercialization Gap Fund and Commercialization Fellows Program. M.J.D. is a Fellow in the Genetic

Networks program at the Canadian Institute for Advanced Research and is supported in part by a Faculty Scholar grant from the Howard Hughes Medical Institute.

## Conflict of interest

J.N.B., I.L., J.S. and M.J.D. have financial interests in Phase Genomics, a company that has commercialized the Hi-C genome assembly technique. I.L. is a current employee of Phase Genomics.

## Nucleic acid sequences

Sequences are deposited in NCBI SRA and Assembly under the Project ID PRJNA390460.

## References

- Abbott R, Albach D, Ansell S, *et al.* 2013. Hybridization and speciation. *J Evol Biol* **26**(2): 229–246.
- Albertin W, Marullo P. 2012. Polyploidy in fungi: evolution after whole-genome duplication. *P Roy Soc B – Biol Sci* **279**(1738): 2497–2509.
- Altschul SF, Gish W, Miller W, Myers EW, Lipman DJ. 1990. Basic local alignment search tool. *J Mol Biol* **215**(3): 403–410.
- Baker E, Wang B, Bellora N, *et al.* 2015. The genome sequence of *Saccharomyces eubayanus* and the domestication of lager-brewing yeasts. *Mol Biol Evol* **32**(11): 2818–2831.
- Beitel CW, Froenicke L, Lang JM, *et al.* 2014. Strain- and plasmid-level deconvolution of a synthetic metagenome by sequencing proximity ligation products. *Peer J* **2**: e415.
- Bellon JR, Yang F, Day MP, Inglis DL, Chambers PJ. 2015. Designing and creating *Saccharomyces* interspecific hybrids for improved, industry relevant, phenotypes. *Appl Microbiol Biotechnol* **99**(20): 8597–8609.
- Bokulich NA, Bamforth CW, Mills DA. 2012. Brew-house-resident microbiota are responsible for multi-stage fermentation of American coolship ale. *PLoS One* **7**(4): e35507.
- Borneman AR, Zeppel R, Chambers PJ, Curtin CD. 2014. Insights into the *Dekkera bruxellensis* genomic landscape: Comparative genomics reveals variations in ploidy and nutrient utilisation potential amongst wine isolates. *PLoS Genet* **10**(2): e1004161.
- Bullini L. 1994. Origin and evolution of animal hybrid species. *Trends Ecol Evol* **9**(11): 422–426.
- Burton JN, Adey A, Patwardhan RP, Qiu R, Kitzman JO, Shendure J. 2013. Chromosome-scale scaffolding of *de novo* genome assemblies based on chromatin interactions. *Nat Biotechnol* **31**(12): 1119–1125.
- Burton JN, Liachko I, Dunham MJ, Shendure J. 2014. Species-level deconvolution of metagenome assemblies with Hi-C-based contact probability maps. *G3* **4**(7): 1339–1346.
- Carr R, Shen-Orr SS, Borenstein E. 2013. Reconstructing the genomic content of microbiome taxa through shotgun metagenomic deconvolution. *PLoS Comput Biol* **9**(10): e1003292.
- Chan GF, Gan HM, Ling HL, Rashid NA. 2012. Genome sequence of *Pichia kudriavzevii* M12, a potential producer of bioethanol and phytase. *Eukaryot Cell* **11**(10): 1300–1301.
- Clemente-Jimenez JM, Mingorance-Cazorla L, Martinez-Rodriguez S, Las Heras-Vazquez FJ, Rodriguez-Vico F. 2005. Influence of sequential yeast mixtures on wine fermentation. *Int J Food Microbiol* **98**(3): 301–308.
- Daniel HM, Vrancken G, Takrama JF, Camu N, De Vos P, De Vuyst L. 2009. Yeast diversity of Ghanaian cocoa bean heap fermentations. *FEMS Yeast Res* **9**(5): 774–783.
- Dekker J, Marti-Renom MA, Mirny LA. 2013. Exploring the three-dimensional organization of genomes: interpreting chromatin interaction data. *Nat Rev Genet* **14**(6): 390–403.
- Del Monaco SM, Barda NB, Rubio NC, Caballero AC. 2014. Selection and characterization of a Patagonian *Pichia kudriavzevii* for wine deacidification. *J Appl Microbiol* **117**(2): 451–464.
- Dowling TE, Secor CL. 1997. The role of hybridization and introgression in the diversification of animals. *Annu Rev Ecol Syst* **28**: 593–619.
- Dunn B, Sherlock G. 2008. Reconstruction of the genome origins and evolution of the hybrid lager yeast *Saccharomyces pastorianus*. *Genome Res* **18**(10): 1610–1623.
- Felsenstein J. 2005. PHYLIP (Phylogeny Inference Package). version 3.6. Distributed by the author. Department of Genome Sciences, University of Washington, Seattle.
- Fujii T, Nakashima K, Hayashi N. 2005. Random amplified polymorphic DNA-PCR based cloning of markers to identify the beer-spoilage strains of *Lactobacillus brevis*, *Pediococcus damnosus*, *Lactobacillus collinoides* and *Lactobacillus coryniformis*. *J Appl Microbiol* **98**(5): 1209–1220.
- Gallone B, Steensels J, Pahl T, *et al.* 2016. Domestication and divergence of *Saccharomyces cerevisiae* beer yeasts. *Cell* **166**(6): 1397–1410 e1316.
- Gibson B, Liti G. 2015. *Saccharomyces pastorianus*: genomic insights inspiring innovation for industry. *Yeast* **32**(1): 17–27.
- Gonzalez SS, Barrio E, Gafner J, Querol A. 2006. Natural hybrids from *Saccharomyces cerevisiae*, *Saccharomyces bayanus* and *Saccharomyces kudriavzevii* in wine fermentations. *FEMS Yeast Res* **6**(8): 1221–1234.
- Gonzalez SS, Barrio E, Querol A. 2008. Molecular characterization of new natural hybrids of *Saccharomyces cerevisiae* and *S. kudriavzevii* in brewing. *Appl Environ Microb* **74**(8): 2314–2320.
- Handelsman J. 2004. Metagenomics: application of genomics to uncultured microorganisms. *Microbiol Mol Biol R* **68**(4): 669–685.
- Hellborg L, Piskur J. 2009. Complex nature of the genome in a wine spoilage yeast, *Dekkera bruxellensis*. *Eukaryot Cell* **8**(11): 1739–1749.
- Hoffmann AA, Sgro CM. 2011. Climate change and evolutionary adaptation. *Nature* **470**(7335): 479–485.
- Howe AC, Jansson JK, Malfatti SA, Tringe SG, Tiedje JM, Brown CT. 2014. Tackling soil diversity with the assembly of large, complex metagenomes. *Proc Natl Acad Sci U S A* **111**(13): 4904–4909.
- Hug LA, Castelle CJ, Wrighton KC, *et al.* 2013. Community genomic analyses constrain the distribution of metabolic traits across the Chloroflexi phylum and indicate roles in sediment carbon cycling. *Microbiome* **1**(1): 22.



- Human Microbiome Project Consortium. 2012. Structure, function and diversity of the healthy human microbiome. *Nature* **486**(7402): 207–214.
- Iverson V, Morris RM, Frazar CD, Berthiaume CT, Morales RL, Armbrust EV. 2012. Untangling genomes from metagenomes: revealing an uncultured class of marine Euryarchaeota. *Science* **335**(6068): 587–590.
- Jara C, Laurie VF, Mas A, Romero J. 2016. Microbial terroir in Chilean valleys: diversity of non-conventional yeast. *Front Microbiol* **7**: 663.
- Kamke J, Sczyrba A, Ivanova N, *et al.* 2013. Single-cell genomics reveals complex carbohydrate degradation patterns in poribacterial symbionts of marine sponges. *ISME J* **7**(12): 2287–2300.
- Kaplan N, Dekker J. 2013. High-throughput genome scaffolding from *in vivo* DNA interaction frequency. *Nat Biotechnol* **31**(12): 1143–1147.
- Keersmaecker JD. 1996. The mystery of lambic beer. *Scientific American* **275**(2): 74–80.
- Kelly B, Whiteley A, Tallmon D. 2010. The Arctic melting pot. *Nature* **468**(7326): 891.
- Knight S, Klaere S, Fedrizzi B, Goddard MR. 2015. Regional microbial signatures positively correlate with differential wine phenotypes: evidence for a microbial aspect to terroir. *Sci Rep* **5**: 14233.
- Kurtzman CP. 2011. Phylogeny of the ascomycetous yeasts and the renaming of *Pichia anomala* to *Wickerhamomyces anomalus*. *Antonie Van Leeuwenhoek* **99**(1): 13–23.
- Kurtzman CP, Fell JW, Boekhout T. 2011. *The Yeasts, a Taxonomic Study*, vol. 1. Elsevier: Oxford.
- Kurtzman CP, Robnett CJ, Basehoar-Powers E. 2008. Phylogenetic relationships among species of *Pichia*, *Issatchenkia* and *Williopsis* determined from multigene sequence analysis, and the proposal of *Barnettozyma* gen. nov., *Lindnera* gen. nov. and *Wickerhamomyces* gen. nov. *FEMS Yeast Res* **8**(6): 939–954.
- Lachance MA. 1995. Yeast communities in a natural tequila fermentation. *Antonie Van Leeuwenhoek* **68**(2): 151–160.
- Lane DJ, Pace B, Olsen GJ, Stahl DA, Sogin ML, Pace NR. 1985. Rapid determination of 16S ribosomal RNA sequences for phylogenetic analyses. *Proc Natl Acad Sci U S A* **82**(20): 6955–6959.
- Li H, Durbin R. 2009. Fast and accurate short read alignment with Burrows–Wheeler transform. *Bioinformatics* **25**(14): 1754–1760.
- Lieberman-Aiden E, van Berkum NL, Williams L, *et al.* 2009. Comprehensive mapping of long-range interactions reveals folding principles of the human genome. *Science* **326**(5950): 289–293.
- Magalhaes F, Krogerus K, Vidgren V, Sandell M, Gibson B. 2017. Improved cider fermentation performance and quality with newly generated *Saccharomyces cerevisiae* × *Saccharomyces eubayanus* hybrids. *J Ind Microbiol Biotechnol* **44**(8): 1203–1213.
- Mallet J. 2007. Hybrid speciation. *Nature* **446**(7133): 279–283.
- Marbouty M, Baudry L, Cournac A, Koszul R. 2017. Scaffolding bacterial genomes and probing host–virus interactions in gut microbiome by proximity ligation (chromosome capture) assay. *Sci Adv* **3**(2): e1602105.
- Marbouty M, Cournac A, Flot JF, Marie-Nelly H, Mozziconacci J, Koszul R. 2014. Metagenomic chromosome conformation capture (meta3C) unveils the diversity of chromosome organization in microorganisms. *Elife* **3**: e03318.
- Marcy Y, Ouverney C, Bik EM, *et al.* 2007. Dissecting biological ‘dark matter’ with single-cell genetic analysis of rare and uncultivated TM7 microbes from the human mouth. *Proc Natl Acad Sci U S A* **104**(29): 11889–11894.
- Martens H, Dawoud E, Verachtert H. 1991. Wort enterobacteria and other microbial populations involved during the first month of lambic fermentation. *J Inst Brewing* **97**(6): 435–439.
- Martens H, Iserentant D, Verachtert H. 1997. Microbiological aspects of a mixed yeast–bacterial fermentation in the production of a special Belgian acidic ale. *J Inst Brewing* **103**(2): 85–91.
- Muhlfeld CC, Kovach RP, Jones LA, *et al.* 2014. Invasive hybridization in a threatened species is accelerated by climate change. *Nat Clim Change* **4**(7): 620–624.
- Nakao Y, Kanamori T, Itoh T, *et al.* 2009. Genome sequence of the lager brewing yeast, an interspecies hybrid. *DNA Res* **16**(2): 115–129.
- Nardi T, Remize F, Alexandre H. 2010. Adaptation of yeasts *Saccharomyces cerevisiae* and *Brettanomyces bruxellensis* to winemaking conditions: a comparative study of stress genes expression. *Appl Microbiol Biotechnol* **88**(4): 925–937.
- N’Guessan KF, Brou K, Jacques N, Casaregola S, Dje KM. 2011. Identification of yeasts during alcoholic fermentation of tchapalo, a traditional sorghum beer from Cote d’Ivoire. *Antonie Van Leeuwenhoek* **99**(4): 855–864.
- Osburn K, Amaral J, Metcalf SR, *et al.* 2018. Primary souring: a novel bacteria-free method for sour beer production. *Food Microbiol* **70**: 76–84.
- Pace NR, Stahl DA, Lane DJ, Olsen GJ. 1986. The Analysis of Natural Microbial Populations by Ribosomal RNA Sequences. *Adv Microb Ecol* **9**: 1–55.
- Papazian C. 2017. *Brewers Association Beer Style Guidelines*. Brewers Association.
- Peng Y, Leung HC, Yiu SM, Chin FY. 2012. IDBA-UD: a *de novo* assembler for single-cell and metagenomic sequencing data with highly uneven depth. *Bioinformatics* **28**(11): 1420–1428.
- Piskur J, Ling Z, Marcet-Houben M, *et al.* 2012. The genome of wine yeast *Dekkera bruxellensis* provides a tool to explore its food-related properties. *Int J Food Microbiol* **157**(2): 202–209.
- Pryszcz LP, Nemeth T, Gacsar A, Gabaldon T. 2014. Genome comparison of *Candida orthopsilosis* clinical strains reveals the existence of hybrids between two distinct subspecies. *Genome Biol Evol* **6**(5): 1069–1078.
- Rajendhran J, Gunasekaran P. 2011. Microbial phylogeny and diversity: small subunit ribosomal RNA sequence analysis and beyond. *Microbiol Res* **166**(2): 99–110.
- Rankine BC. 1966. *Pichia membranaefaciens*, a yeast causing film formation and off-flavor in table wine. *Am J Enol Viticult* **17**(2): 82–86.
- Riley R, Haridas S, Wolfe KH, *et al.* 2016. Comparative genomics of biotechnologically important yeasts. *Proc Natl Acad Sci U S A* **113**(35): 9882–9887.
- Rojas V, Gil JV, Pinaga F, Manzanares P. 2001. Studies on acetate ester production by non-*Saccharomyces* wine yeasts. *Int J Food Microbiol* **70**(3): 283–289.
- Rozpedowska E, Hellborg L, Ishchuk OP, *et al.* 2011. Parallel evolution of the make-accumulate-consume strategy in *Saccharomyces* and *Dekkera* yeasts. *Nat Commun* **2**: 302.
- Saeed I, Tang SL, Halgamuge SK. 2012. Unsupervised discovery of microbial population structure within metagenomes using nucleotide base composition. *Nucl Acids Res* **40**(5): e34.

- Sievers F, Wilm A, Dineen D, et al. 2011. Fast, scalable generation of high-quality protein multiple sequence alignments using Clustal Omega. *Mol Syst Biol* **7**: 539.
- Silva CL, Vianna CR, Cadete RM, et al. 2009. Selection, growth, and chemo-sensory evaluation of flocculent starter culture strains of *Saccharomyces cerevisiae* in the large-scale production of traditional Brazilian cachaca. *Int J Food Microbiol* **131**(2–3): 203–210.
- Snauwaert I, Stragier P, De Vuyst L, Vandamme P. 2015. Comparative genome analysis of *Pediococcus damnosus* LMG 28219, a strain well-adapted to the beer environment. *BMC Genomics* **16**: 267.
- Spitaels F, Li L, Wieme A, et al. 2014. *Acetobacter lambici* sp. nov., isolated from fermenting lambic beer. *Int J System Evol Microbiol* **64**(Pt 4): 1083–1089.
- Spitaels F, Van Kerrebroeck S, Wieme AD, et al. 2015. Microbiota and metabolites of aged bottled gueuze beers converge to the same composition. *Food Microbiol* **47**: 1–11.
- Spitaels F, Wieme A, Balzarini T, et al. 2014a. *Gluconobacter cerevisiae* sp. nov., isolated from the brewery environment. *Int J System Evol Microbiol* **64**(Pt 4): 1134–1141.
- Spitaels F, Wieme AD, Janssens M, et al. 2014b. The microbial diversity of traditional spontaneously fermented lambic beer. *PLoS One* **9**(4): e95384.
- Stanke M, Morgenstern B. 2005. AUGUSTUS: a web server for gene prediction in eukaryotes that allows user-defined constraints. *Nucl Acids Res* **33**(Web Server issue): W465–W467.
- Stanke M, Steinkamp R, Waack S, Morgenstern B. 2004. AUGUSTUS: a web server for gene finding in eukaryotes. *Nucl Acids Res* **32**(Web Server issue): W309–W312.
- Steensels J, Daenen L, Malcorps P, Derdelinckx G, Verachtert H, Verstrepen KJ. 2015. *Brettanomyces* yeasts – from spoilage organisms to valuable contributors to industrial fermentations. *Int J Food Microbiol* **206**: 24–38.
- Stefanini I, Albanese D, Cavazza A, et al. 2016. Dynamic changes in microbiota and mycobiota during spontaneous 'Vino Santo Trentino' fermentation. *Microbial Biotechnol* **9**(2): 195–208.
- Stefanini I, Dapporto L, Berna L, Polsinelli M, Turillazzi S, Cavalieri D. 2016. Social wasps are a *Saccharomyces* mating nest. *Proc Natl Acad Sci U S A* **113**(8): 2247–2251.
- Stepanuskas R. 2012. Single cell genomics: an individual look at microbes. *Curr Opin Microbiol* **15**(5): 613–620.
- Strope PK, Skelly DA, Kozmin SG, et al. 2015. The 100-genomes strains, an *S. cerevisiae* resource that illuminates its natural phenotypic and genotypic variation and emergence as an opportunistic pathogen. *Genome Res* **25**(5): 762–774.
- Tamai Y, Momma T, Yoshimoto H, Kaneko Y. 1998. Co-existence of two types of chromosome in the bottom fermenting yeast, *Saccharomyces pastorianus*. *Yeast* **14**(10): 923–933.
- Vallejo-Marin M, Hiscock SJ. 2016. Hybridization and hybrid speciation under global change. *New Phytol* **211**(4): 1170–1187.
- van Rijswijk IMH, Wolkers-Rooijackers JCM, Abee T, Smid EJ. 2017. Performance of non-conventional yeasts in co-culture with brewers' yeast for steering ethanol and aroma production. *Microbial Biotechnol*.
- Vanoevenelen D, Spaepen M, Timmermans P, Verachtert H. 1977. Microbiological aspects of spontaneous wort fermentation in production of lambic and gueuze. *J Inst Brewing* **83**(6): 356–360.
- Varela C, Borneman AR. 2017. Yeasts found in vineyards and wineries. *Yeast* **34**(3): 111–128.
- Venter JC, Remington K, Heidelberg JF, et al. 2004. Environmental genome shotgun sequencing of the Sargasso Sea. *Science* **304**(5667): 66–74.
- Verachtert H, Iserentant D. 1995. Properties of Belgian acid beers and their microflora. Part I. The production of gueuze and related refreshing acid beers. *Cerevisia, Belgian J Brew Biotechnol* **20**: 37–41.
- Viana F, Gil JV, Genoves S, Valles S, Manzanares P. 2008. Rational selection of non-*Saccharomyces* wine yeasts for mixed starters based on ester formation and enological traits. *Food Microbiol* **25**(6): 778–785.
- Wolfe KH. 2015. Origin of the yeast whole-genome duplication. *PLoS Biol* **13**(8): e1002221.
- Wood DE, Salzberg SL. 2014. Kraken: ultrafast metagenomic sequence classification using exact alignments. *Genome Biol* **15**(3).
- Woelfit M, Rozpedowska E, Piskur J, Wolfe KH. 2007. Genome survey sequencing of the wine spoilage yeast *Dekkera (Brettanomyces) bruxellensis*. *Eukaryot Cell* **6**(4): 721–733.
- Yamagishi H, Ogata T. 1999. Chromosomal structures of bottom fermenting yeasts. *Syst Appl Microbiol* **22**(3): 341–353.
- Ye M, Yue T, Yuan Y. 2014. Effects of sequential mixed cultures of *Wickerhamomyces anomalus* and *Saccharomyces cerevisiae* on apple cider fermentation. *FEMS Yeast Res* **14**(6): 873–882.